



MECHANICAL FITTINGS AND ACCESSORIES

154 Connector for water meters

MECHANICAL FITTINGS AND ACCESSORIES



SIZE	PRESSURE	CODE	PACKING
3/4"x1/2"	20bar/290psi	1540034	20/400
1"x3/4"	20bar/290psi	1540100	10/200
1"1/4x1"	20bar/290psi	1540114	6/120
1"1/2x1"1/4	20bar/290psi	1540112	2/80
2"x1"1/2	20bar/290psi	1540200	2/40
2"1/2x2"	20bar/290psi	1540212I	1/28

CERTIFICATIONS



TECHNICAL SPECIFICATIONS

Available sizes:

F3/4"xM1/2", F1"xM3/4", F1"1/4XM1", F1"1/2XM1"1/4, F2"XM1"1/2, F2"1/2XM2".

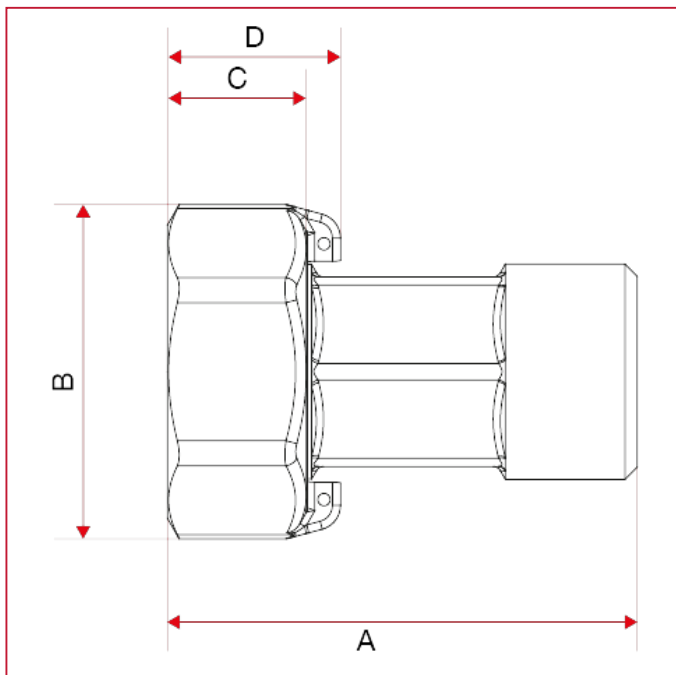
Nut and tail in brass.

Minimum and maximum working temperatures: -20°C, 120°C.

Threads: ISO 228 (equivalent to DIN EN ISO 228 and BS EN ISO 228).

Available also with NPT thread.

OVERALL DIMENSIONS

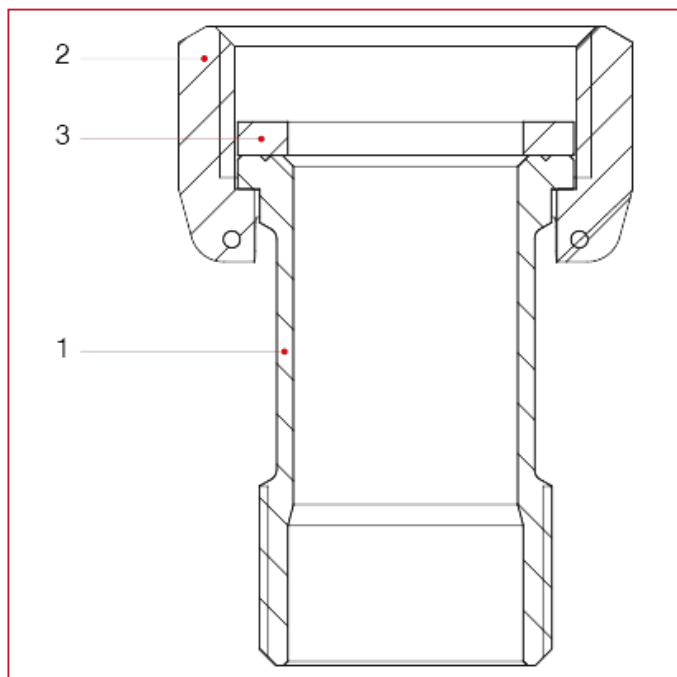




MECHANICAL FITTINGS AND ACCESSORIES

	3/4"x1/2"	1"x3/4"	1"1/4x1"	1"1/2x1" 1/4	2"x1"1/2	2"1/2x2"
DN	15	20	25	32	40	50
A	45,5	57	60,5	71	80,5	94
B	32	40,5	51,6	59,5	70	89
C	14,5	17	21,5	23	24,5	28
D	19	21	27	28	29	33,5
Kg/cm2 bar	20	20	20	20	20	20
LBS - psi	290	290	290	290	290	290

MATERIALS



POS.	DESCRIPTION	N.	MATERIAL
1	Union	1	Brass CW617N
2	Nut	1	Brass CW617N
3	Washer	1	EPDM