



TECHNICAL CATALOGUE

MECHANICAL FITTINGS AND ACCESSORIES





MECHANICAL FITTINGS AND ACCESSORIES

151 3-piece straight connector, flat washer

MECHANICAL FITTINGS AND ACCESSORIES



| SIZE | PRESSURE | CODE | PACKING |
|-------|----------------|---------|---------|
| 1/2" | 50bar/725psi | 1510012 | 20/220 |
| 3/4" | 40bar/580psi | 1510034 | 15/150 |
| 1" | 40bar/580psi | 1510100 | 12/96 |
| 1"1/4 | 30bar/435psi | 1510114 | 8/64 |
| 1"1/2 | 30bar/435psi | 1510112 | 6/30 |
| 2" | 25bar/362,5psi | 1510200 | 2/26 |

CERTIFICATIONS



TECHNICAL SPECIFICATIONS

Suitable for domestic water services, heating and air-conditioning plants.

Body in brass or nickel-plated brass.

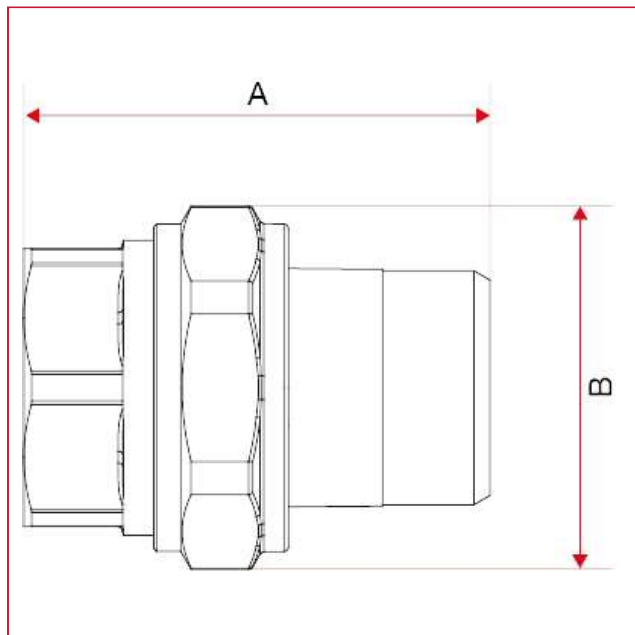
Minimum and maximum working temperatures: -20°C, 120°C (in absence of steam).

Female threads: ISO228 (equivalent to DIN EN ISO 228 and BS EN ISO 228).



MECHANICAL FITTINGS AND ACCESSORIES

OVERALL DIMENSIONS

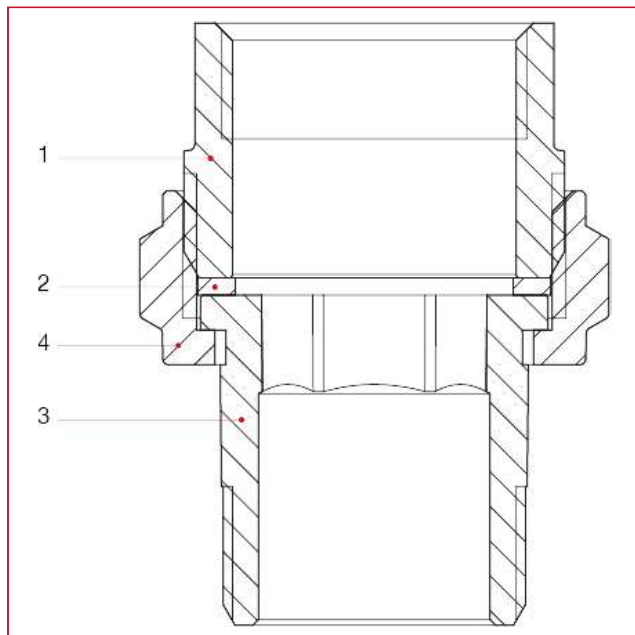


| | 1/2" | 3/4" | 1" | 1"1/4 | 1"1/2 | 2" |
|------------|------|------|-----|-------|-------|-------|
| DN | 15 | 20 | 25 | 32 | 40 | 50 |
| A | 47 | 52 | 61 | 69,5 | 74 | 78 |
| B | 33 | 40,5 | 49 | 55 | 69 | 87 |
| Kg/cm2 bar | 50 | 40 | 40 | 30 | 30 | 25 |
| LBS - psi | 725 | 580 | 580 | 435 | 435 | 362,5 |



MECHANICAL FITTINGS AND ACCESSORIES

MATERIALS



| POS. | DESCRIPTION | N. | MATERIAL |
|------|-----------------------------------|----|--------------|
| 1 | Streight connector with flat seat | 1 | Brass CW617N |
| 2 | Flat seat washer | 1 | Fiber |
| 3 | Flat seat union | 1 | Brass CW617N |
| 4 | Nut | 1 | Brass CW617N |



MECHANICAL FITTINGS AND ACCESSORIES

152 3-piece elbow, flat washer

MECHANICAL FITTINGS AND ACCESSORIES



| SIZE | PRESSURE | CODE | PACKING |
|-------|--------------|---------|---------|
| 1/2" | 50bar/725psi | 1520012 | 15/240 |
| 3/4" | 40bar/580psi | 1520034 | 12/96 |
| 1" | 40bar/580psi | 1520100 | 8/64 |
| 1"1/4 | 30bar/435psi | 1520114 | 6/48 |

CERTIFICATIONS



TECHNICAL SPECIFICATIONS

Suitable for domestic water services, heating and air-conditioning plants.

Body in brass or nickel-plated brass.

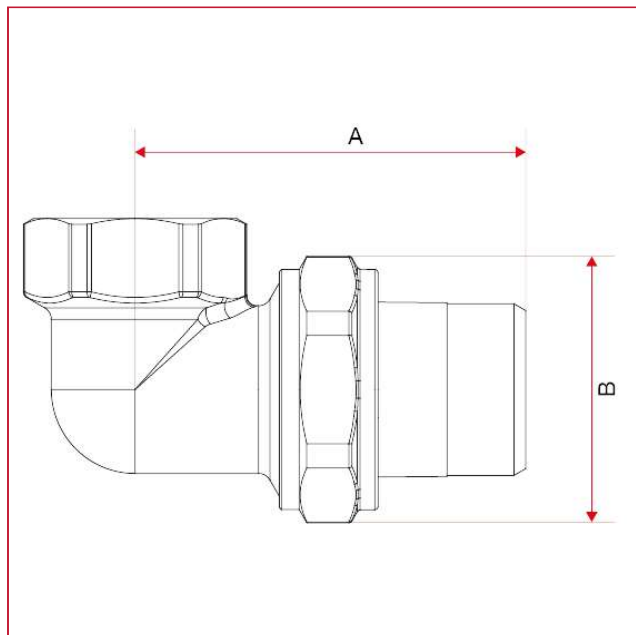
Minimum and maximum working temperatures: -20°C, 120°C (in absence of steam).

Female threads: ISO228 (equivalent to DIN EN ISO 228 and BS EN ISO 228).



MECHANICAL FITTINGS AND ACCESSORIES

OVERALL DIMENSIONS

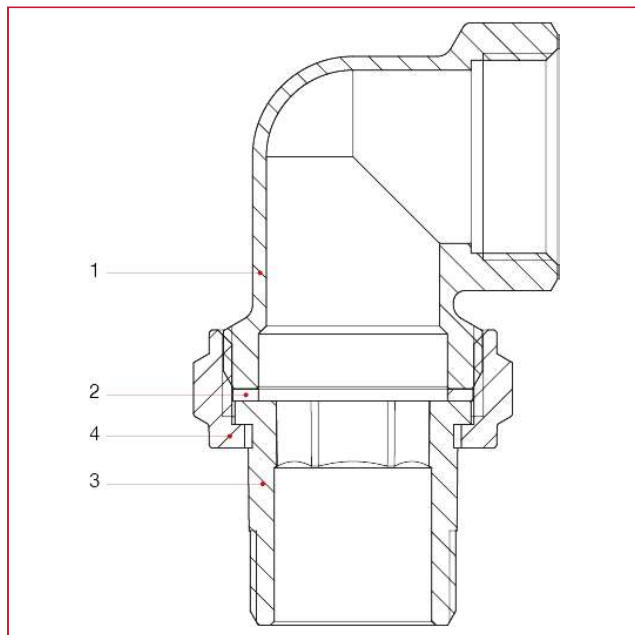


| | 1/2" | 3/4" | 1" | 1 1/4" |
|------------|------|------|-----|--------|
| DN | 15 | 20 | 25 | 32 |
| A | 51,5 | 59,5 | 70 | 79,5 |
| B | 33 | 40,5 | 49 | 55 |
| Kg/cm2 bar | 50 | 40 | 40 | 30 |
| LBS - psi | 725 | 580 | 580 | 435 |



MECHANICAL FITTINGS AND ACCESSORIES

MATERIALS



| POS. | DESCRIPTION | N. | MATERIAL |
|------|------------------|----|--------------|
| 1 | Elbow adaptor | 1 | Brass CW617N |
| 2 | Flat seat washer | 1 | Fiber |
| 3 | Flat seat union | 1 | Brass CW617N |
| 4 | Nut | 1 | Brass CW617N |