

DUCTILE IRON FLANGED BALL CHECK VALVE PN10

PRODUCT EVOLUTION



Be careful, our ball check valves 332 are changing

**We currently have 2 different types available (according to DN)
with different dimensions and spare parts**

New type :



At the end, only the new type will be available (from pages 2 to 6)

DUCTILE IRON FLANGED BALL CHECK VALVE PN10

Ductile iron flanged PN10 ball check valve for water distribution and watering.
Ductile iron body EN GJS-500-7 epoxy anticorrosion painting coated and stainless steel bolting.
Removable bonnet for easy maintenance.

Certificat

3.1

NEW



Size : DN40 to DN300
Connection : Flanges PN10/16 RF
Min Temperature : -10°C
Max Temperature : +80°C
Max Pressure : 16 Bars (up to DN150)
Specifications : Ball type
Vertical or horizontal installation
Removable bonnet

Materials : Ductile iron body EN GJS-500-7

DUCTILE IRON FLANGED BALL CHECK VALVE PN10

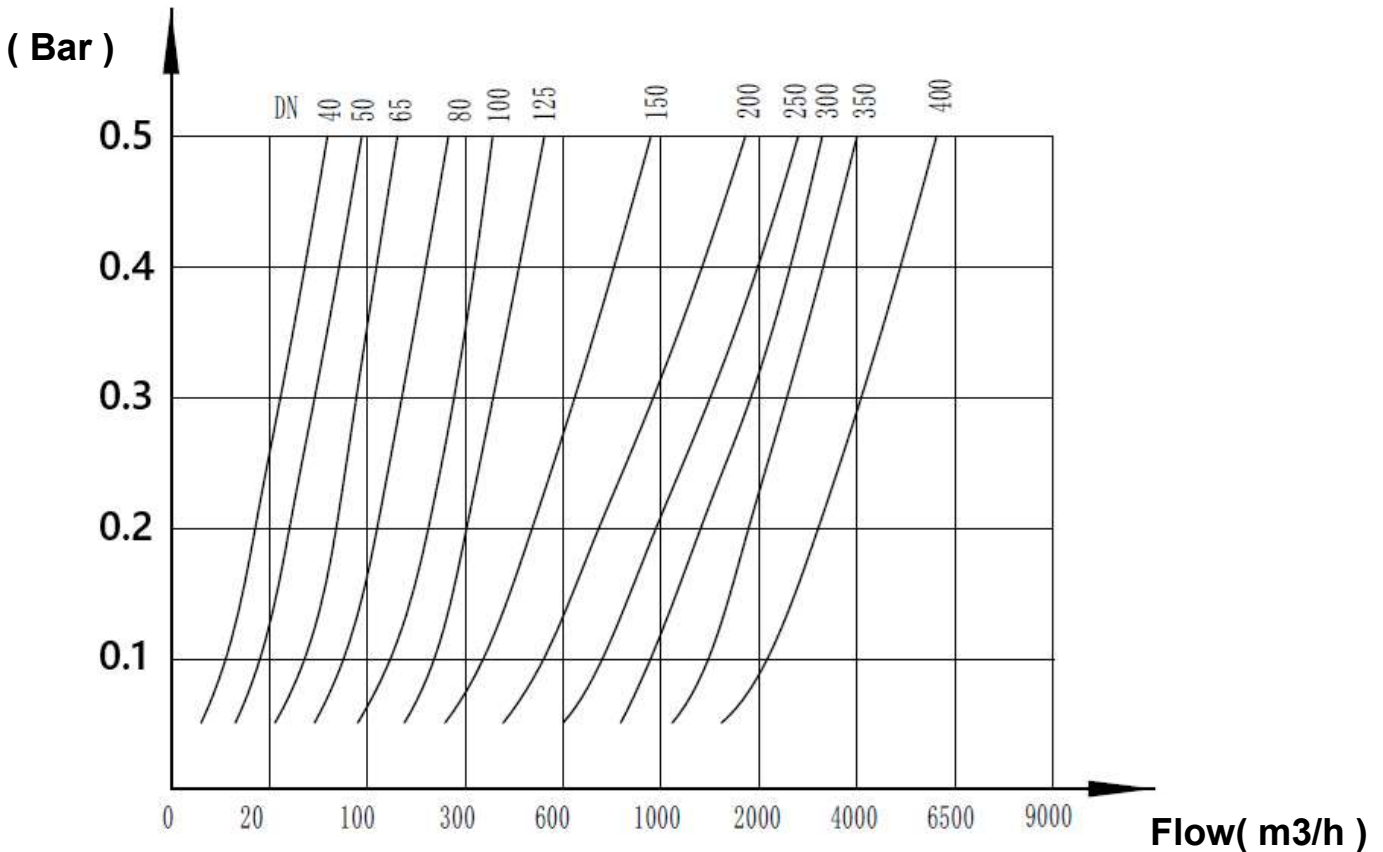
SPECIFICATIONS :

- Ball type
- Vertical with ascendant fluid or horizontal (respect the flow direction indicated by the arrow)
- PN10/16 RF Flanges from DN40 to 150, PN10 over
- Easy maintenance thanks to the bolted bonnet
- Anti-corrosion epoxy painting RAL 5005 blue color, 250 microns thickness
- Anti-corrosion stainless steel bolting
- Minimum backpressure for tightness: 1 bar

USE :

- Water distribution and watering
- Min Temperature Ts : - 10°C
- Max Temperature Ts :+ 80°C
- Max Pressure Ps : 16 bars up to DN150, 10 bars over

HEAD LOSS GRAPH :



FLOW COEFFICIENT Kvs (in m3/h) :

DN	50	65	80	100	125	150	200	250	300
Kvs (m3/h)	72	210	390	425	720	880	1550	2250	3250

DUCTILE IRON FLANGED BALL CHECK VALVE PN10

RANGE :

- PN10/16 RF Flanges from DN40 to 150 and PN10 over **Ref. 332** from DN40 to 300

REPAIRABILITY :



Marking :



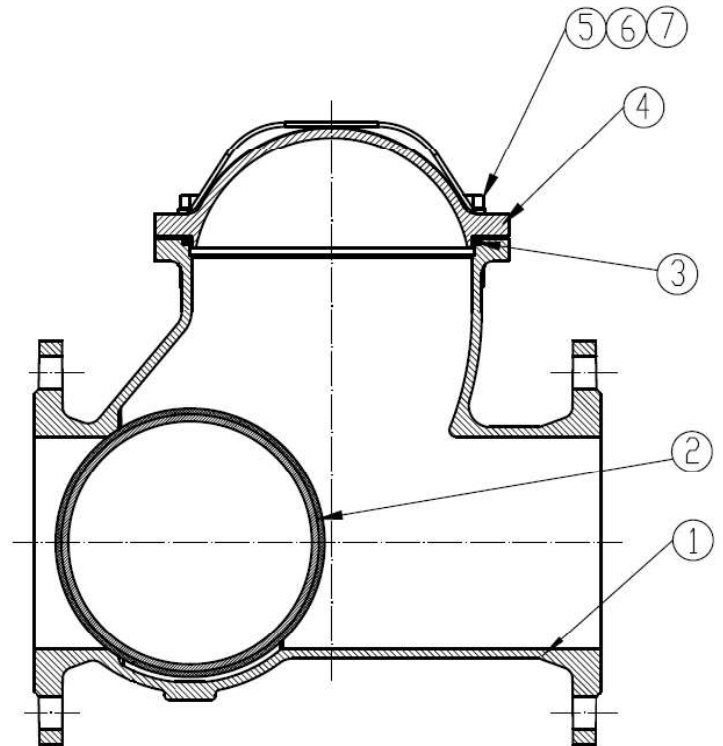
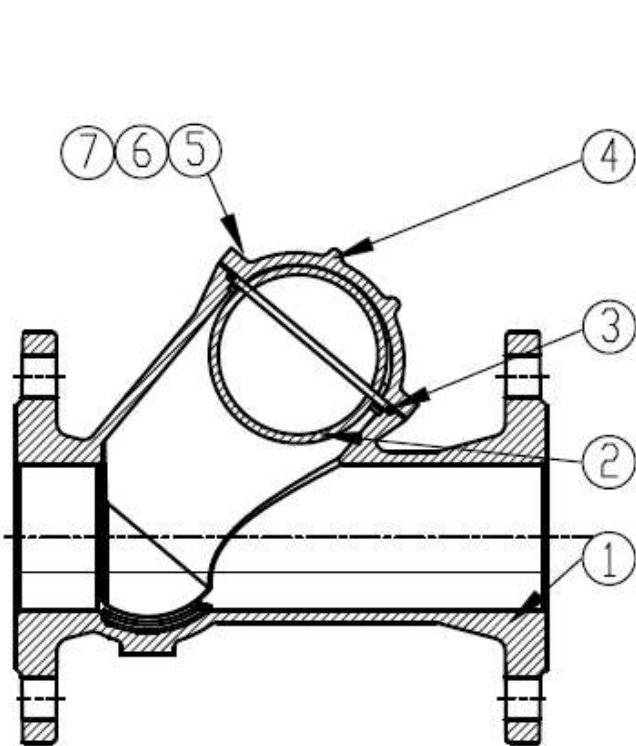
DN	O ring bonnet gasket (item 3)	Ball (item 2)
	Ref. and dimensions	Ref.
DN40	9803781 (Ø 54.5x3.55)	9803770
DN50	9803783 (Ø 71x3.55)	9803771
DN65	9803784 (Ø 90x3.55)	9803772
DN80	9803785 (Ø 107x4)	9803773
DN100	9803786 (Ø 132x5.3)	9803774
DN125	9803787 (Ø 180x5.3)	9803775
DN150	9803788 (Ø 218x5.3)	9803776
DN200	9803789 (Ø 283x7)	9803777
DN250	9803790 (Ø 335x7)	9803778
DN300	9803791 (Ø 391x7)	9803779

DUCTILE IRON FLANGED BALL CHECK VALVE PN10

MATERIALS :

DN40-100

DN125-300

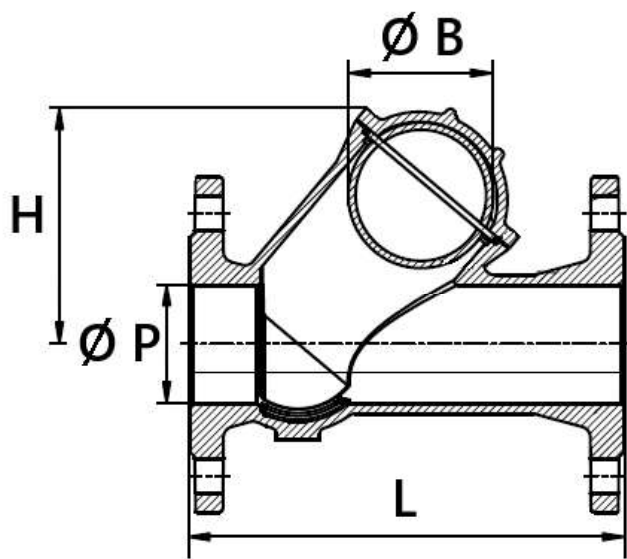


Item	Designation	Materials
1	Body	Ductile iron EN GJS-500-7
2	Ball	Carbon steel NBR coated
3	Bonnet gasket	NBR
4	Bonnet	Ductile iron EN GJS-500-7
5	Nut	AISI 304
6	Screw	
7	Washer	

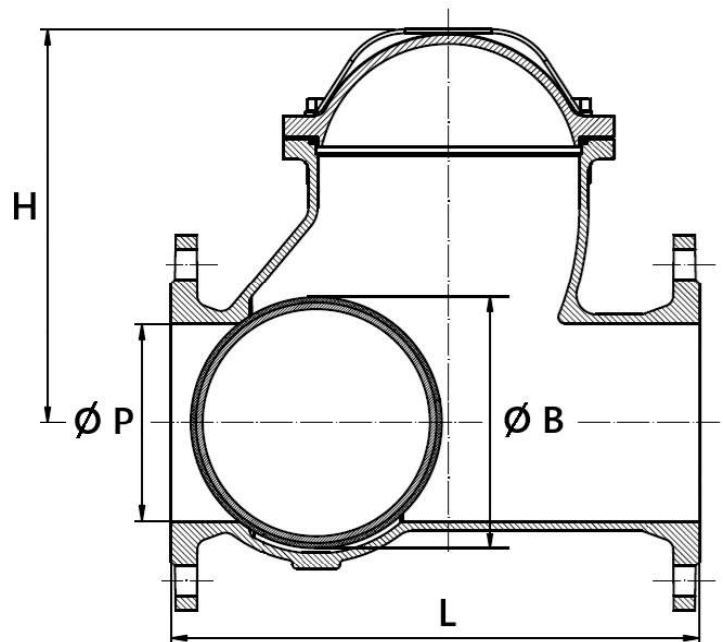
DUCTILE IRON FLANGED BALL CHECK VALVE PN10

SIZE (in mm) :

DN40-100



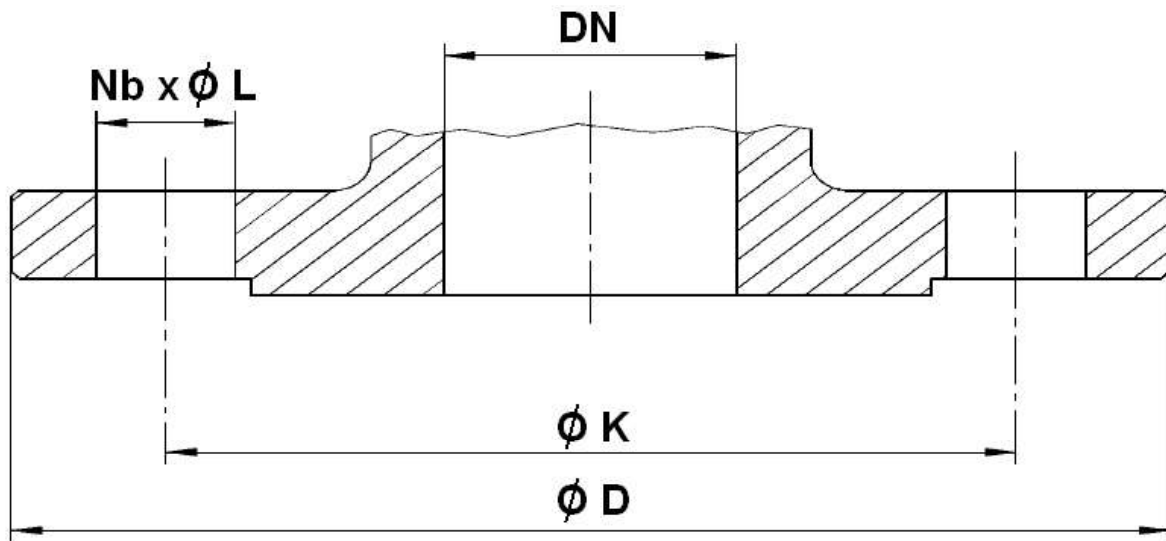
DN125-300



DN	40	50	65	80	100	125	150	200	250	300
L	180	200	240	260	300	350	400	500	600	700
H	92	110	135	155	198	250	300	370	455	520
Ø B	49.5	62	80	100	125	155	190	250	300	356
Ø P	40	50	65	80	100	125	150	200	250	300
Weight (in Kg)	7	7	9.5	12.6	15.7	26	37.2	68.2	107	146.5
Ref.	332040	332050	332065	332080	332100	332125	332150	332200	332250	332300

DUCTILE IRON FLANGED BALL CHECK VALVE PN10

FLANGES SIZE (in mm) :



DN	40	50	65	80	100	125	150	200	250	300
Ø D	150	165	185	200	220	250	285	340	405	460
Ø K	110	125	145	160	180	210	240	295	350	400
Nb x Ø L	4 x 19		8 x 19			8 x 23		12 x 23		

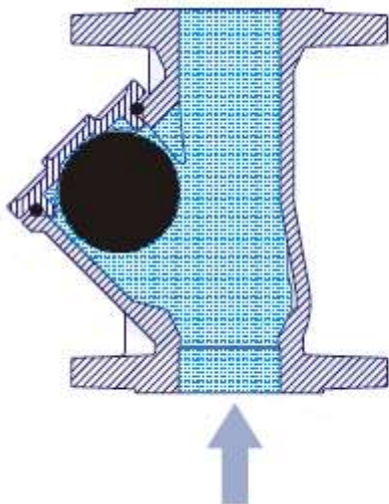
DUCTILE IRON FLANGED BALL CHECK VALVE PN10

STANDARDS :

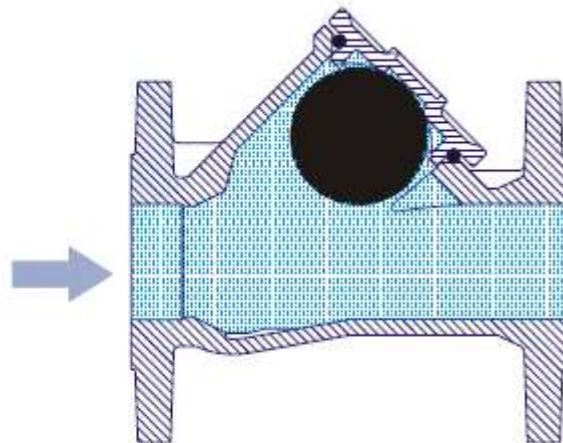
- Manufacturer certified ISO 9001 : 2015 and ISO 14001 : 2015
- DIRECTIVE 2014/68/EU : Products excluded from directive (Article 1, § 2b)
- Certificate 3.1 on request
- Design according to EN 5153
- PN10/16 flanges according to EN 1092-2
- Length according to EN 558 series 48 (DIN 3202 F6)
- **Body** test according to EN 12266-1

INSTALLATION POSITIONS :

Vertical position (Ascendant fluid)



Horizontal position



ADVICE : Our opinion and our advice are not guaranteed and SFERACO shall not be liable for the consequences of damages. The customer must check the right choice of the products with the real service conditions.